



CHC30113 Certificate III in Early Childhood Education and Care

To work in child care you must have, or be actively working towards, at least a Certificate III qualification. This qualification reflects the role of workers in a range of early childhood education settings who work within the requirements of the Education and Care Services National Regulations and the National Quality Standard.

They support the implementation of an approved learning framework, and support children's well-being, learning and development. Depending on the setting, educators may work under direct supervision or autonomously.

User Choice (Apprenticeships and Traineeships)

Queensland Department of Training and Education provides funding for User Choice Apprenticeships and Traineeships in Queensland, subject to eligibility conditions being met.

Queensford College is a Pre-Qualified Supplier under this program for the delivery of this Certificate III qualification as an apprenticeship or traineeship pathway for new and existing workers.

For more information about the User Choice 2016-17 program, view the following link:

<https://training.qld.gov.au/training/incentives/userchoice>

User Choice Contribution Fees

The Contribution Fee under the User Choice program is dependent on the elective choice. Fees are paid at a rate of \$1.60 per nominal hour. This fee represents the total cost to the student to enrol, undertake training and be awarded the qualification.

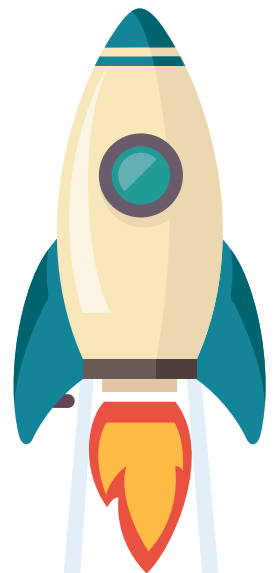
School-based apprentices and trainees are exempt for co-contribution fees.

Entry Requirements

There are no prerequisites for entry into this course however it is desired that candidates have completed Australian Year 10 (or equivalent).

Possible Career Outcomes

- Childhood Educator or Assistant Educator
- Preschool Aide
- Nanny
- Outside School Hours Care Assistant
- Playgroup Supervisor
- Family Day Care Educator
- Recreation Assistant





Unit Information

Code	Title	Nominal Hours
Core Units		
CHCLEG001	Work legally and ethically	55
CHCPRT001	Identify and respond to children and young people at risk	40
CHCECE009	Use an approved learning framework to guide practice	70
CHCECE003	Provide care for children	70
CHCECE005	Provide care for babies and toddlers	60
CHCECE002	Ensure the health and safety of children	63
CHCECE004	Promote and provide healthy food and drinks	35
HLTWHS001	Participate in workplace health and safety	20
CHCECE016	Establish and maintain a safe and healthy environment for children	50
CHCECE010	Support the holistic development of children in early childhood	70
CHCECE007	Develop positive and respectful relationships with children	70
CHCECE011	Provide experiences to support children's play and learning	40
CHCECE013	Use information about children to inform practice	40
CHCECE001	Develop cultural competence	30
CHCDIV002	Promote Aboriginal and/or Torres Strait Islander cultural safety	70
Elective Units		
CHCECE006	Support behaviour of children and young people	25
CHCDIV001	Work with diverse people	40
HLTAID003	Provide first aid	18

Course Requirements

To achieve a Certificate III in Early Childhood Education and Care 18 units must be completed including 15 core units and 3 elective units.

Course Delivery

The Certificate III in Early Childhood Education and Care is delivered over 24 months. Customised to suit the client requirements but can include workplace training, blended, face to face, on campus, and online methods.

CONTACT US FOR MORE INFORMATION

Call us on **(07) 3221 1626** or email **info@queensford.edu.au** for more information on our courses.

Queensford College is the trading name of Malekhu Investments Pty Ltd
 Level 2, 359 Queen Street Brisbane QLD 4000 | www.queensford.edu.au | info@queensford.edu.au
 ABN 17129064437 | RTO 31736 | CRICOS 03010G

All information in this document was correct at the time of publication but is subject to change.
 June 2017 v2

