

Certificate III in Early Childhood Education and Care

CHC30113

To work in child care you must have, or be actively working towards, at least a Certificate III qualification. This qualification reflects the role of workers in a range of early childhood education settings who work within the requirements of the Education and Care Services National Regulations and the National Quality Standard.

They support the implementation of an approved learning framework, and support children's well-being, learning and development. Depending on the setting, educators may work under direct supervision or autonomously.

Under the Education and Care Services National Law (2011) the Australian Children's Education and Care Quality Authority (ACECQA) publishes lists of approved early childhood education and care qualifications and information regarding regulatory requirements here: www.acecqa.gov.au

What You'll Learn

- Organise personal work priorities and development to ensure effectiveness in the workplace
- Promote Aboriginal and/or Torres Strait Islander cultural safety and develop cultural competence
- Ensure the health and safety of children and provide care for children and provide healthy food and drinks
- Support behaviour of children and young people and develop positive and respectful relationships with children
- Use and approved learning framework to guide practice and support the holistic development of children in early childhood
- Support children to connect with their world and use information about children to inform practice
- Work legally and ethically, identify and respond to children and young people at risk and participate in work health and safety

Course Details



Study Mode
Face to Face



Duration
3.5 Hours per Session
30 Weeks + 1 Full Days



Start Date
Week 20/2 or 21/1



Location
Adelaide Campus



Vocational Placement
120 hours, Assistance Available



Assessments
Quizzes, Activities, Case Study Material



SACE Credits
115 max. SACE Stage 2



Course Fees
\$1800

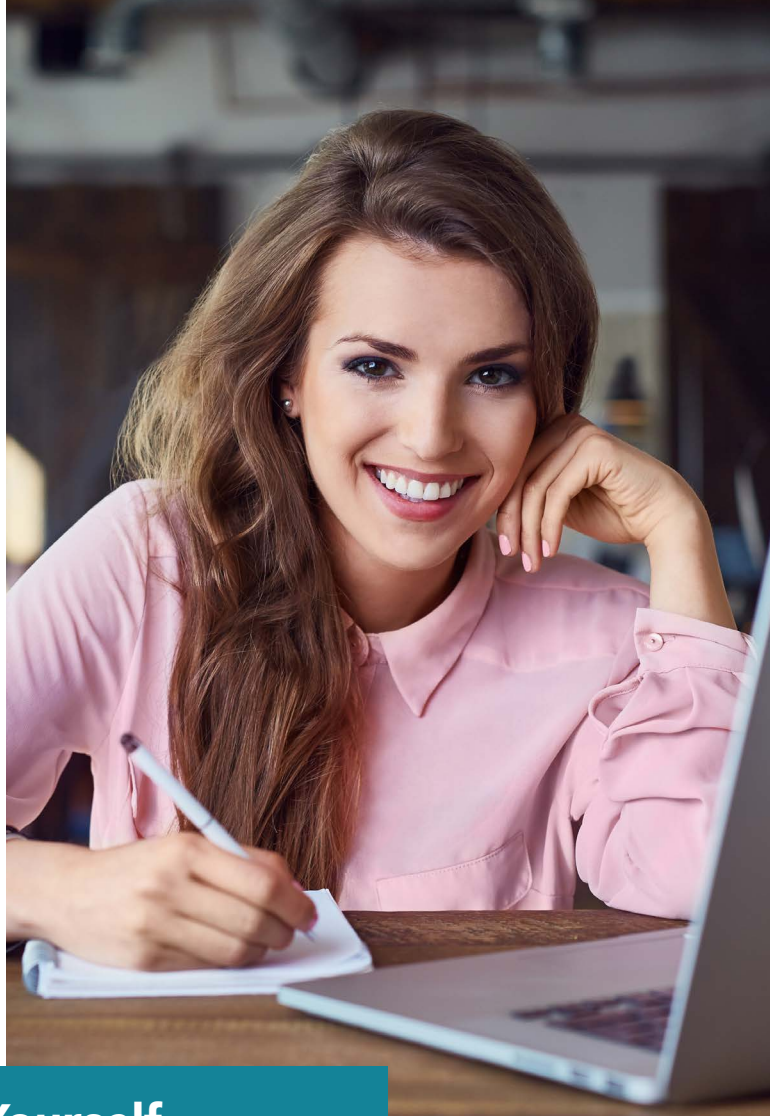
Possible Career Outcomes

- Childhood Educator or Assistant Educator
- Playgroup Supervisor
- Preschool Aide
- Family Day Care Educator
- Nanny
- Outside School Hours Care Assistant*
- Recreation Assistant

Course Unit Outline

CHCDIV001	Work with diverse people
CHCDIV002*	Promote Aboriginal and/or Torres Strait Islander cultural safety
CHCECE001*	Develop cultural competence
CHCECE002	Ensure the health and safety of children
CHCECE003	Provide care for children
CHCECE004	Promote and provide healthy food and drinks
CHCECE005	Provide care for babies and toddlers
CHCECE006	Support behaviour of children and young people
CHCECE007	Develop positive and respectful relationships with children
CHCECE009	Use and approved learning framework to guide practice
CHCECE010	Support the holistic development of children in early childhood
CHCECE011	Provide experiences to support children's play and learning
CHCECE016	Establish and maintain a safe and healthy environment for children
CHCECE013	Use information about children to inform practice
CHCLEG001	Work legally and ethically

* Core Units



At Queensford College, See Yourself...

- Become a competitive student with a **Nationally Recognised Qualification**
- Study and train under a world-class team that are all qualified educators, experienced professionals, and industry experts
- Focus more on your course and worry less about payment
- Be supported by a dedicated student support team so you will never have to miss an assessment, a lesson, or an activity

Entry Requirements

- Student must be enrolled in a SA high school
- Student must reside in SA
- Student must be enrolled in year level 10 – 12
- Student must be an Australian Citizen, Permanent Resident or hold a Humanitarian Visa

APPLY TODAY FOR MORE INFORMATION

Contact our VETiS Team on **(08) 8410 4605** or email sa@queensford.edu.au for more information on aged care courses.

Queensford College is the trading name of Malekhu Investments Pty Ltd
Level 11 90 King William Street Adelaide SA 5000 | www.queensford.edu.au | sa@queensford.edu.au
ABN 17129064437 | RTO 31736 | CRICOS 03010G

All information in this document was correct at the time of printing but is subject to change.
June 2017 v4

