



SIT30616 Certificate III in Hospitality

(Back of House)

The Certificate III in Hospitality can help you to develop universal skills and knowledge which could send you on your way to your dream career. You have the option of learning about food & beverage, accommodation, or gaming, or mix it up.

From working in hotels, restaurants and cafes to 'cruising' the Caribbean, you are only limited by your imagination. The hospitality industry has endless opportunities and with it being one of the largest industries across the world, there is no limit to where it could take you.

User Choice (Apprenticeships and Traineeships)

Queensland Department of Training and Education provides funding for User Choice Apprenticeships and Traineeships in Queensland, subject to eligibility conditions being met.

Queensford College is a Pre-Qualified Supplier under this program for the delivery of this Certificate III qualification as an apprenticeship or traineeship pathway for new and existing workers.

For more information about the User Choice 2016-17 program, view the following link:

<https://training.qld.gov.au/training/incentives/userchoice>

User Choice Contribution Fees

The Contribution Fee under the User Choice program is dependent on the elective choice. Fees are paid at a rate of \$1.60 per nominal hour. This fee represents the total cost to the student to enrol, undertake training and be awarded the qualification.

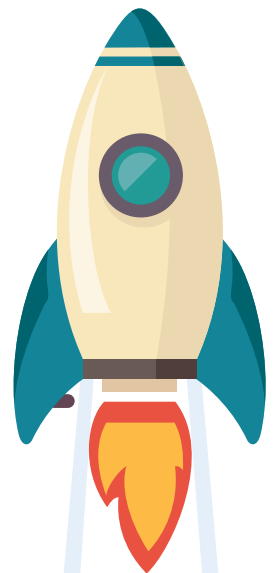
School-based apprentices and trainees are exempt for co-contribution fees.

Entry Requirements

There are no prerequisites for entry into this course however it is desired that candidates have completed Australian Year 10 (or equivalent).

Possible Career Outcomes

- Kitchen Hand
- Food & Beverage Attendant





Unit Information

Code	Title	Nominal Hours
Core Units		
BSBWOR203	Work effectively with others	15
SITHIND002	Source and use information on the hospitality industry	25
SITHIND004	Work effectively in hospitality service	0
SITXCCS006	Provide service to customers	25
SITXCOM002	Show social and cultural sensitivity	20
SITXHRM001	Coach others in job skills	20
SITXWHS001	Participate in safe work practices	12
Elective Units		
Please <input checked="" type="checkbox"/> tick 8 units from below.		
Group A		
SITXFSA001	<input type="checkbox"/> Use hygienic practices for food safety	15
Group B		
SITXFSA002	<input type="checkbox"/> Participate in safe food handling practices	40
SITHCCC002*	<input type="checkbox"/> Prepare and present simple dishes	25
SITHCCC003	<input type="checkbox"/> Prepare and present sandwiches	10
SITHCCC006	<input type="checkbox"/> Prepare appetisers and salads	25
SITHKOP001	<input type="checkbox"/> Clean kitchen premises and equipment	13
Group C		
SITXINV002	<input type="checkbox"/> Maintain the quality of perishable items	10
HLTAID003	<input type="checkbox"/> Provide first aid	18
SITXINV001	<input type="checkbox"/> Receive and store stock	10
BSBSUS201	<input type="checkbox"/> Participate in environmentally sustainable work practices	20

* Requires students to have completed the unit SITXFSA001 Use hygienic practices for food safety in full prior to commencement

Course Requirements

To achieve a Certificate III in Hospitality 15 units must be completed including 7 core units and 8 elective units.

Of the elective units, 1 unit must be chosen from Group A, 5 units from Group B, and 2 units from Group B or Group C.

Course Delivery

The Certificate III in Hospitality is delivered over 12 months. Customised to suit the client requirements but can include workplace training, blended, face to face, on campus, and online methods.

CONTACT US FOR MORE INFORMATION

Call us on **(07) 3221 1626** or email info@queensford.edu.au for more information on our courses.

Queensford College is the trading name of Malekhu Investments Pty Ltd
Level 2, 359 Queen Street Brisbane QLD 4000 | www.queensford.edu.au | info@queensford.edu.au
ABN 17129064437 | RTO 31736 | CRICOS 03010G

All information in this document was correct at the time of publication but is subject to change.
June 2017 v2

