



## CHC50113 Diploma of Early Childhood Education and Care

**Are you a compassionate, optimistic and supportive person? Would you like to make a difference to the lives of children? Do you aspire to manage a childcare center, or perhaps run your own?**

**The Diploma of Early Childhood Education and Care will give you the skills and knowledge you require to do just that.**

### User Choice (Apprenticeships and Traineeships)

Queensland Department of Training and Education provides funding for User Choice Apprenticeships and Traineeships in Queensland, subject to eligibility conditions being met.

Queensford College is a Pre-Qualified Supplier under this program for the delivery of this Diploma level qualification as an apprenticeship or traineeship pathway for new and existing workers.

For more information about the User Choice 2016-17 program, view the following link:

<https://training.qld.gov.au/training/incentives/userchoice>

### User Choice Contribution Fees

The Contribution Fee under the User Choice program is dependent on the elective choice. Fees are paid at a rate of \$1.60 per nominal hour. This fee represents the total cost to the student to enrol, undertake training and be awarded the qualification.

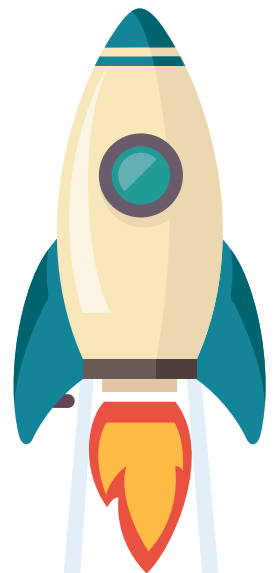
School-based apprentices and trainees are exempt for co-contribution fees.

### Entry Requirements

There are no prerequisites for entry into this course however it is desired that candidates have completed Australian Year 10 (or equivalent).

### Possible Career Outcomes

- Childcare Center Director
- Education Leader
- Group Leader
- Childcare Educator





## Course Requirements

To achieve the Diploma of Early Childhood Education and Care 28 units must be completed including 23 core units and 3 elective units.

## Course Delivery

The Diploma of Early Childhood Education and Care is delivered over 36 months. Customised to suit the client requirements but can include workplace training, blended, face to face, on campus, and online methods.

## Unit Information

Code	Title	Nominal Hours
<b>Core Units</b>		
CHCLEG001	Work legally and ethically	55
CHCECE009	Use an approved learning framework to guide practice	70
CHCPRT001	Identify and respond to children and young people at risk	40
CHCECE003	Provide care for children	70
CHCECE005	Provide care for babies and toddlers	60
CHCECE002	Ensure the health and safety of children	63
CHCECE004	Promote and provide healthy food and drinks	35
CHCECE006	Support behaviour of children and young people	30
CHCECE007	Develop positive and respectful relationships with children	70
CHCECE010	Support the holistic development of children in Early Childhood	70
CHCECE013	Use information about children to inform practice	40
CHCDIV002	Promote Aboriginal and/or Torres Strait Islander cultural safety	25
CHCECE001	Develop cultural competence	70
CHCECE019	Facilitate compliance in an education and care service	120
CHCECE025	Embed sustainable practices in service operations	60
CHCECE017	Foster the holistic development and wellbeing of the child in early childhood	240
CHCECE018	Nurture creativity in children	80
CHCECE022	Promote children's agency	80
CHCECE023	Analyse information to inform learning	70
CHCECE024	Design and implement the curriculum to foster children's learning and development	170
CHCECE016	Establish and maintain a safe and healthy environment for children	50
HLTWHS003	Maintain work health and safety	40
CHCECE020	Establish and implement plans for developing cooperative behaviour	50
CHCECE021	Implement strategies for the inclusion of all children	50
CHCECE026	Work in partnership with families to provide appropriate education and care for children	70
<b>Elective Units</b>		
CHCDIV001	Work with diverse people	100
CHCMGT003	Lead the work team	40
HLTAID003	Provide first aid	18

# CONTACT US FOR MORE INFORMATION

Call us on **(07) 3221 1626** or email [info@queensford.edu.au](mailto:info@queensford.edu.au) for more information on our courses.

Queensford College is the trading name of Malekhu Investments Pty Ltd  
 Level 2, 359 Queen Street Brisbane QLD 4000 | [www.queensford.edu.au](http://www.queensford.edu.au) | [info@queensford.edu.au](mailto:info@queensford.edu.au)  
 ABN 17129064437 | RTO 31736 | CRICOS 03010G

All information in this document was correct at the time of publication but is subject to change.  
 June 2017 v2

