



## Certificate III in Individual Support (Ageing)

CHC33015 CRICOS 089224D

**Do you have a passion for helping the elderly and disabled? Work in a job that makes a difference to lives of people in need.**

Aged care is a rapidly growing industry, with the average human life expectancy being longer than ever before. Our ageing population is creating a wealth of opportunities for those with educational qualifications. As of 2017, Australia's aged and community care industry currently employs a quarter of a million workers.

This qualification reflects the role of support workers who complete specialised tasks and functions in aged services; either in residential, home or community based environments. Workers will take responsibility for their development, facilitation and review of individualised service planning and delivery.

### What You'll Learn

- To facilitate the empowerment of older people and provide support to people living with dementia
- Meet personal support needs for clients and Provide individualised support including loss and grief support
- Support independence and wellbeing of your clients including communication skills
- To provide home and community support services while following safe work practices for direct client care

### Course Details



**Study Mode**

Face to Face



**Duration**

3 hours per session  
27 weeks + 1 full day



**Start Date**

20/2 or 21/2



**Location**

Adelaide Campus



**Vocational Placement**

120 hours



**Assessments**

Quizzes, activities, case study, and vocational placement material



**SACE Credits**

100 SACE Stage 2

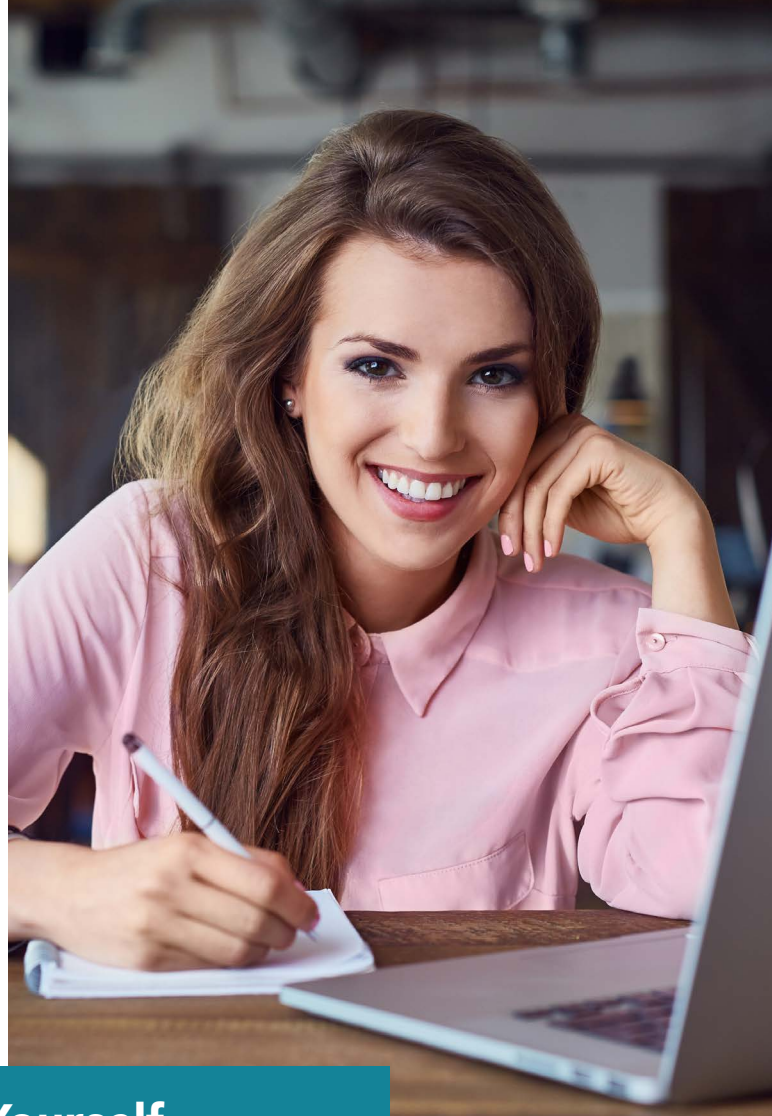
### Possible Career Outcomes

- Accommodation Support Worker
- Food Services Worker (Aged Care)
- Personal Care Giver
- Respite Care Worker

## Course Unit Outline

CHCAGE001	Facilitate the empowerment of older people
CHCAGE002	Implement falls prevention strategies
CHCAGE005	Provide support to people living with dementia
CHCCCS011	Meet personal support needs
CHCCCS015*	Provide individualised support
CHCCCS017	Provide loss and grief support
CHCCCS023*	Support independence and well being
CHCCOM005	Communicate and work in health or community services
CHCDIV001*	Work with diverse people
HLTINF001	Comply with infection prevention and control policies and procedures
CHCLEG001*	Work legally and ethically
HLTAAP001*	Recognise healthy body systems
HLTWHS002*	Follow safe work practices for direct client care
HLTWHS005	Conduct manual tasks safely
HLTWHS003	Provide first aid

\* Core Units



## At Queensford College, See Yourself...

- Become a competitive student with a Nationally Recognised Qualification
- Study and train under a world-class team that are all qualified educators, experienced professionals, and industry experts
- Focus more on your course and worry less about payment
- Be supported by a dedicated student support team so you will never have to miss an assessment, a lesson, or an activity

### Entry Requirements

- Student must be enrolled in a SA high school
- Student must reside in SA
- Student must be enrolled in year level 10 – 12
- Student must be an Australian Citizen, Permanent Resident or hold a Humanitarian Visa

## APPLY TODAY FOR MORE INFORMATION

Contact our VETiS Team on **(08) 8410 4605** or email [sa@queensford.edu.au](mailto:sa@queensford.edu.au) for more information on aged care courses.

Queensford College is the trading name of Malekhu Investments Pty Ltd  
Level 11 90 King William Street Adelaide SA 5000 | [www.queensford.edu.au](http://www.queensford.edu.au) | [sa@queensford.edu.au](mailto:sa@queensford.edu.au)  
ABN 17129064437 | RTO 31736 | CRICOS 03010G

All information in this document was correct at the time of printing but is subject to change.  
May 2017 v4

